

# EDITORS

## • THE OKLAHOMA Farmer-Stockman

F. J. Deering, Editor

F. J. Deering, editor of The Farmer-Stockman, takes a part in a wide range of civic activities. He is counsellor and past chairman of the Agriculture and Livestock Division of the Oklahoma City Chamber of Commerce, a member and past-chairman of the Oklahoma State University Agricultural Advisory Committee, a member of the board of directors of the University of Oklahoma Research Institute, first vice-president of the Oklahoma Association for the National Cowboy Hall of Fame, a former member of the Southern Regional Education Board's commission for advancement of agricultural sciences. He is chairman of the Agricultural Committee of the Oklahoma State Chamber of Commerce.

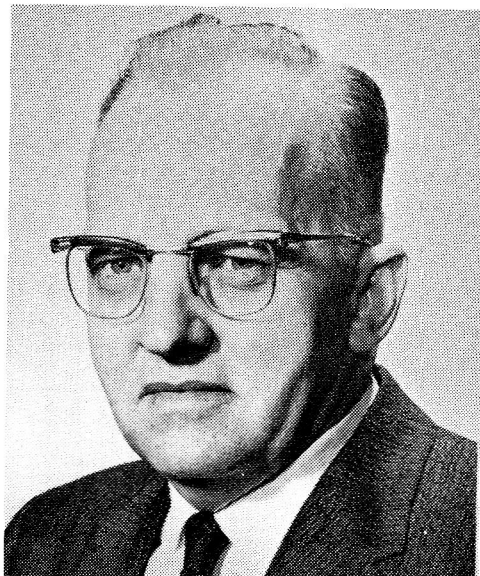
Deering holds honorary memberships in both the Future Farmers of America and the 4-H Clubs of Oklahoma. He has served as president of the Sirloin Club of Oklahoma, the American Agricultural Editors' Association, and of the Oklahoma City Farm Club. He takes an active part in his church (Nichols Hills Baptist Church). He and Mrs. Deering have two children, Cheryl, (Mrs. Richard R. Wilson of Alton, Ill.) and Robert, 15.

Born in Texas, the son of a cattleman and merchant who moved to Oklahoma a few years after statehood, Deering was educated in the public schools and East Central State College at Ada, Oklahoma. He left a position as night editor of the Ada News in January, 1937, to join The Farmer-Stockman as associate editor. When editor Clarence Roberts died in 1942, Deering was named to succeed him. The Farmer-Stockman is now published separate as three magazines, one for Oklahoma, one for Texas, and the new Kansas Farmer-Stockman.

Memberships and offices held by F. J. Deering. January 1, 1961.

Editor, The Farmer-Stockman.

## • THE TEXAS Farmer-Stockman



F. J. Deering

## • THE KANSAS Farmer-Stockman

The Oklahoma Publishing Company, Director and Assistant Secretary (1958-59-60-61). Management Committee, Member (1948-19). Budget & Finance Subcommittee, Member. Product Improvement Subcommittee, Member. Columnist & Contributor, The Daily Oklahoman and Sunday Oklahoman.

Oklahoman and Times Charities, Inc., Director and Vice-President (1957-).

Agricultural Advisory Committee, Oklahoma State University, past chairman (1954-).

University of Oklahoma Research Institute, Member and Director (expires 1963).

Commission for Advancement of Agricultural Sciences of the Southern Regional Education Board, Member Publications Committee (1955-1960).

Sirloin Club of Oklahoma, Charter Member, President 1958 and 1959, Vice President 1957, Director.

Oklahoma City Farm Club, Charter Member, President 1955-56, 1st Vice President 1956-57.

Oklahoma Association for National Cowboy Hall of Fame, First Vice President (1955-).

Southwest American Exposition, Inc., Vice President (1956-).

Oklahoma State Chamber of Commerce, Chairman of Agricultural Committee (1960-).

Oklahoma City Chamber of Commerce (1958-), Counsellor of Agriculture and Livestock Division, comprising ten committees, Member of Board of Directors, 4th Vice President (1961-).

Men's Dinner Club, (1944-), member of Executive Committee (1952-1953).

Young Men's Christian Association, Member.

American Agricultural Editors' Association.

Past President (1951) joined 1942.

American Association of Agricultural College Editors, Associate Member.

Oklahoma Cattlemen's Association, Member.

Oklahoma Farm Bureau, Member.

Oklahoma Outdoor Writers Association, Member.

Soil Conservation Society of America, Central Oklahoma Chapter, Member.

Association of Southern Agricultural Workers, Member.

Baptist Church, Member and Deacon (Nichols Hills Baptist Church, Oklahoma City).

Honors:

4-H Clubs of Oklahoma, Honorary Lifetime Member (1945).

Texas 4-H Club Certificate of Recognition, (1958).

Honorary Master Farmer, Oklahoma Future Farmers (1953).

Honorary Lone Star Farmer, Texas Future Farmers of America (1947).

Honorary Master Agronomist, Oklahoma State University (1956).

Governors Award in Soil and Water Conservation (1957).

Soil Conservation Laymen's Award (1952).

Special Rural Neighborhood Award, Texas A&M College (1960).

Certificate of Appreciation, Oklahoma Cattlemen's Association (1960).

Soil Management Award, 1961.

---

### Katharine Randall, Home Editor

No other home editor travels as far or as often as Katharine Randall does to visit as many farm homes in Texas and Oklahoma. A graduate of Ohio University, where she received both A.B. and B.S. degrees in home economics and was elected to Mortar Board, she is trained in all phases of homemaking and takes a sincere interest in understanding people and their homemaking problems. She was professional shopper for Stix, Baer & Fuller, St. Louis, Missouri; teacher of home economics and of English and history in Oklahoma City high schools; and director of Home Service Department and Test Kitchen of Oklahoma Gas and Electric Company.

When Katharine Randall became Mrs. O. W. Rush in September, 1957, she returned to Oklahoma City after living in Dallas for two years. However, she still maintains her office in Dallas and commutes regularly across the Red River. For by-line reasons, she is still known professionally as Katharine Randall.

Since coming to The Farmer-Stockman in 1945 as Home Editor, she has traveled extensively over both Oklahoma and Texas, talking to and with



Katharine Randall

farm women, so that she knows their problems. She keeps her information up-to-date through professional contacts and continual study.

She is an honorary member of both Oklahoma and Texas 4-H Clubs; a member of both Texas and Oklahoma State Home Economics Associations (past president of Oklahoma association); National Farm Home Editors' Association (past president); Southern Agricultural Workers Association; Dallas Fashion Council; University Women's Club; YWCA; First Presbyterian Church.

**Sam E. Whitlow, Texas Editor**



**Sam E. Whitlow**

Sam Whitlow was born in Texas, educated in Texas, and after a few years in other states, came back to Texas, where he is now Texas Editor of *The Farmer-Stockman*.

Mr. Whitlow received both B.A. and M.A. degrees in journalism from Baylor University, and then did a year's work toward a PH.D. in journalism at the University of Missouri. He was active in Sigma Delta Chi, journalism fraternity, and in Alpha Delta Sigman, advertising fraternity.

He began his work as a teacher of journalism at Washington State University, Pullman, Washington. During the seven years he was there, he did some technical agricultural writing in addition to his teaching duties. He came back to the southwest to teach agricultural journalism at Oklahoma State University where, again, teaching was not his only work. He wrote articles for the Experiment Station bulletins and also edited the bulletins. In addition to his teaching and agricultural writing, Mr. Whitlow supplied technical journalistic articles to *National Quill and Scroll*, *National Printer Journalist*, *Washington (State) Newspaper Publishers Association Bulletin*, and the *Oklahoma Press Association* publication.

Following his teaching experience, Mr. Whitlow joined the USDA as a state information man for Oklahoma, and later served as associate agricultural extension editor in the same state.

A period of four years of free lance writing followed as he returned to Port Arthur in his native Texas and devoted full time to writing on agricultural subjects, covering events in Texas and Louisiana. In 1949 he moved to Tyler to become Associate Director of the East Texas Agricultural Council, where he remained until he came to *The Farmer-Stockman* in 1951 as Texas Editor.

Members of Texas 4-H clubs expressed appreciation at their recent roundup to news media for help given rural youth. Presented for the first time were annual awards made to four types of communications. Magazine award was presented to Sam Whitlow, Texas Editor of *The Farmer-Stockman*.

He is a member of the Dallas Agricultural Club (former member of Board of Directors), and the Texas Agricultural Workers Association, (former member of Directors). He is president of the Texas Farm and Ranch Safety Council.

Mr. Whitlow is a member of the American Agricultural Editors Association. He is also active in State Fair of Texas work, serving as a member of the Rural Youth Committee and the Agriculture Advisory Council. He is an associate member of the Texas Press Association.

Active in the First Presbyterian Church at Garland, he is an elder and has served as Sunday School Superintendent.

He and Mrs. Whitlow, the former Frances Denbo, have one son, Weldon, who is a graduate student at Southern Methodist University.

---

**Ernest A. Shiner, Oklahoma Editor**



**Ernest A. Shiner**

Ernest Shiner, a native Oklahoman, has become well acquainted with his own state as Oklahoma Editor of *The Farmer-Stockman*. There isn't a corner of any of the 77 counties he hasn't traveled in the last 9 years in his search for up-to-date farm operations and interesting stories.

He began his career in writing and editing while still in highschool by working on a weekly newspaper. While attending the University of Oklahoma he worked as a linotype operator on

the student newspaper The Oklahoma Daily and at the same time served as a reporter and staff writer.

Following graduation from the School of Journalism at the University he worked in the composing room of the Ada Evening News. Later he taught journalism and related subjects at Southeast Highschool in Oklahoma City. Prior to coming to The Farmer-Stockman in 1952 he was editor of the Weleetka American, a weekly newspaper.

Organizations of which he is a member include the Oklahoma City Farm Club, American Agricultural Editors' Assn., Oklahoma Farm Safety Council, National Land Judging Committee, Oklahoma CROP Committee and Oklahoma Plant Food Society. He is an honorary Junior Master Farmer of the Future Farmers of America

and was cited by the Oklahoma Association of Soil Conservation Districts for service to conservation farming.

The son of E. A. and Clara Whitaker Shiner, he was born at Bethany, Oklahoma, and went to school at Oklahoma City and Edmond before entering the University of Oklahoma. His summers were spent working on a wheat and cattle farm in Beaver county, where he learned firsthand the problems and rewards of good farm management.

In 1947 he was married to Dorothea Marguerite Leffler. They have 5 daughters: Cynthia Ann, 11 Deborah Kay, 9; Pamela Jean, 7; Nancy Elain, 3 and Melinda Susan, 1. They often serve as models as he pursues his hobby of photography and have appeared a few times in The Farmer-Stockman.

---

### Raymond H. Gilkeson, Kansas Editor

Raymond H. Gilkeson was appointed editor of The Kansas Farmer-Stockman after a long and notable career as associate editor, managing editor or editor of six other farm publications. He also has done considerable free-lance writing for livestock breed papers, trade publications, and other magazines.

Educated in Kansas public schools and the University of Kansas, Gilkeson started his editorial career with Capper Publications, Inc. in September, 1920. Since then he has served as a member of the Kansas State 4-H Club Committee, Agriculture Committee—Topeka Chamber of Commerce, the Kansas State Chamber of Commerce, the Kansas Livestock Association, and as a member of the board of directors of Capper Foundation for Crippled Children. A long-time member of the American Agricultural Editors Associations, he served 2 years as vice president and one year as president.

Gilkeson has supported farm youth work in many ways. He has judged projects at state and local fairs, has assisted Future Farmers of America in public speaking contests and helped to start master farmer and master farm homemaker projects in Kansas and Missouri. He was a leader in organizing the Kansas Flying Farmers and is a charter member. Gilkeson was awarded a plaque for outstanding service to the 4-H Clubs in a presentation made at the National 4-H Club Congress in Chicago. He also received the honorary State Farmer degree from the Kansas Future Farmers of America, as well as several awards from the National Farm Safety Council.

Several years ago Raymond Gilkeson was selected by the American Council on Education to serve on the accrediting committee for schools of journalism at Kansas State University, the Uni-



Raymond H. Gilkeson

versity of Missouri, and Oklahoma State University.

Gilkeson states that he found great inspiration at the start of his career as manager of farm clubs for boys and girls and ever since that time he has been a strong supporter of 4-H clubs and vocational agriculture. He knows hundreds of Kansas farmers and ranchers whom he first met while they were 4-H and FFA boys and girls.

The editor of The Kansas Farmer-Stockman has traveled in every county in the state many times calling on farm people to learn more about agriculture and their methods so that he might pass along that information to thousands of others. He is well acquainted with agriculture leaders and is exceptionally well qualified to keep up with new developments in management, production, marketing and farm programs.

To do this he is scheduling regular trips into every section of the state.